

# VB002R VIDEO RECORDING BORESCOPE

## Inspection Camera with Recording LCD Monitor

### Features:

- 10mm camera head
- VGA CMOS Sensor
- 2.4" TFT LCD Panel
- Max.tube length:100mm
- Adjustable with white LED light
- Battery alkaline "AA" 1.5V×4



### Technical specifications

6.1cm TFT resolution	320 x 234 Pixels
Lens sensor resolution	320 x 240 Pixels
Sensitivity	0.7V/(Lux.sec)
Color Mosaic	RGB Bayer patt---ern
White comparison	Automatic
Exposure to light	Automatic
Video format	NTSC & PAL composite video
Camera illumination	4 LEDs, white
Handler end AVI port	NTSC/PAL signal out
Power by	4x1.5V AA
Power Consumption	350 mA
Ambient/operation temperature	0 to 45°C
TV Cable length	Approx 1.5 M
Total length of device	124+-2.0 cm
Metal tube length	99.5 +- 2.0 cm
Minnum bending radius	4.5 cm
Diameter of camera head	10.0 mm
Lens coverage	54 °
Short distance focus	3-6 cm
Weight without accessories	
Photo capture	640x480 (D1) resolution by JPEG format
Movie recording	30fps@720x480 (D1) and 30fps@320x240 (CIF) MJPEG format
AVI Playback	30fps@720x480 (D1) and 30fps@320x240 (CIF) MJPEG format
SD slot	Support Micro SD up to 32GB
Zoom	Maximum to 10 Times
USB Port	USB2.0
Batteies Life	7 Hours Continuous Usage

1



**Please read this information carefully before you use the video borescope.**

#### Environmental conditions

- Do not drop or shake the unit, it might be damaged.
- Do not press the LCD-display with high pressure, it might be damaged.
- Do not leave the unit where the temperature is higher than 45°C, e.g.in cars with closed windows in the summertime, near heaters or any other type of heat source.
- Do not use the unit under high humidity e.g. bathrooms. Parts of the apparatus, tube and mini cam-era are water proofed. See technical specifications for details.
- Do not use the unit at dusty places.
- In case any foreign material or liquid gets into the product, please power it off to avoid the damage.

#### Packaging material

- Please do not keep any packaging material within reach of small children to avoid the unexpected dangerous accidents.

#### Maintenance

- Please remove the battery in case you don't use the product for a longer period of time. Leaking batteries can damage the product. Store the product at a clean and dry place.
- For cleaning use dry and soft cloth.

#### Interference by radio

- The apparatus operates on a frequency, which is also used by other devices, that transmit video by radio. In some cases, this may cause interferences.

### Delivery Content



Video Borescope



PE Carry Case



Hook



Mirror



Magnet



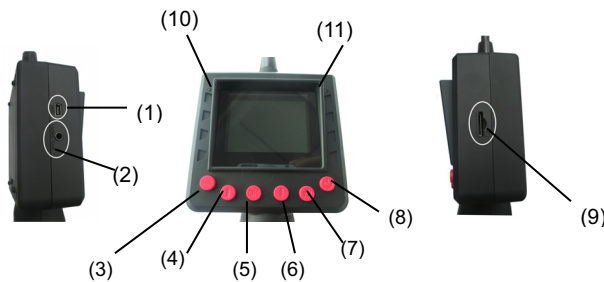
TV Cable



USB Cable

2

### Appliance Description



- (1) USB PORT
- (2) Video out
- (3) MENU
- (4)UP/REPLAY
- (5) OK
- (6) DOWN/ZOOM
- (7) PHOTO/VIDEO
- (8) POWER ON/OFF
- (9)SD-SLOT
- (10)BATTERY INDICATOR
- (11) BATTERY INDICATOR

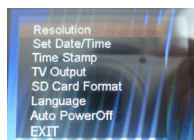
#### Operation

- Turn on the power button (8) at the right side of the video borescope.
- The power indicator (10) lights on as green color, it means the unit is power on.
- Press power button (8) to increase or to decrease the light of the twin LEDs at the imager head.

#### Battery Low Warning

While battery indicator (11) blinks as red color, it means the batteries power low. Please replace the new batteries.

#### Press MENU button



Allow user select: or  
by Pressing button UP or DOWN to select the wanted function.  
by pressing OK button (5) to enter the next level of function.

3

#### In Case Enter to Menu

Allow user set up:

##### Resolution

##### Set Date/Time

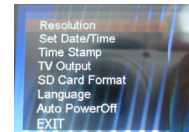
##### TV Output

##### SD Card Format

##### Language

##### Auto poweroff

##### Exit



#### Under Resolution

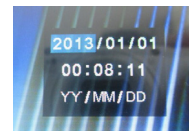
Allow user set up: Standard /High Resolution

#### Under Set Date/Time

Allow user set up:Year/Month/Day

Allow user set up:Hour/Minute/Second

Like the right screen

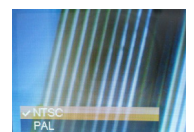


by pressing UP button (4) to adjust the number

by pressing BUTTON (6) down to select the item.

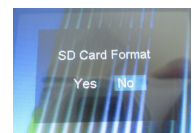
#### Under TV Output

Allow user set up: NTSC/PAL



#### Under SD Card Format

Allow user set up: Yes/No

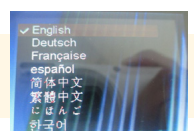


#### Under Language

Allow user set up:

English/Deutsch/ Française

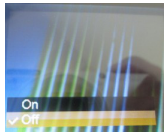
/简体中文/繁體中文/한국어



4

**Under Auto poweroff**

Allow user set up: **On/off**



Select Exit , press OK Button (5) , back to the preview state.

**Zoom Function :**

Under preview state:

Press OK Button (5) to enlarge from 1 to 5 times

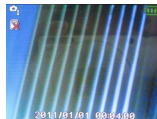


Insert card: Power off the device first, and then insert the TF card  
 ⚠ Please make sure the device is powered off before operating the TF card.  
 ⚠ Please operate gently.

**In Case No SD Card Inserted**

**Preview started**

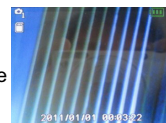
Screen shows no SD symbol on the top left corner



**Note: now Cannot replay and record the videos and photo**

**In Case SD card inserted**

Screen shows SD symbol on the top left corner  
 Please note Camera & Video Record function are executed only while SD card inserted.




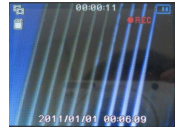
**Camera Function**

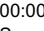
While SD card inserted,  
 Press SNAP button (7) to take the photos

**Video Record Function:**

Press SNAP button (7) for 3 Seconds till

 symbol shows on the top right corner of the screen.



While video recording start, you will see 00:00:01 and  symbol shows on the top of the Screen

To exit Video Record. please press SNAP Button (7) one time.

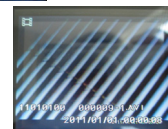
**Photo/Video Review Function:**

Insert card: Power off the device first, and then insert the TF card  
 ⚠ Please make sure the device is powered off before operating the TF card.  
 ⚠ Please operate gently.

Make sure SD card inserted. press UP Button (4) one time to enter data folder, Press UP or DOWN to select the wanted Photo Video



**Watching a video**



Press OK button (5) to play



and stop



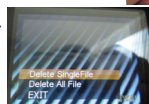
then Press Down button back to data folder



Then press SNAP Button (7) one time, back to preview state.

**Photo/Video Files Delete**

Make sure SD card inserted. press UP Button (4) one time to enter data folder, Press UP or (5) DOWN to select the wanted picture and video. Press menu button (3) ,  
 Allow user set up  
 Delete Single File /Delete All File /EXIT



**Mirror Function:**

Under preview state, press Down Button (6) to rotate.

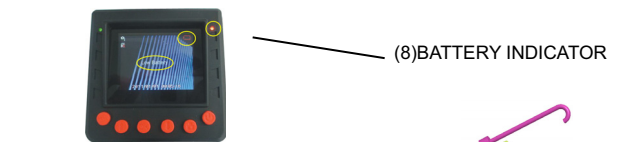


**Insert Batteries**

Pull or push from here for easier open or close the battery door.  
 Powered by 4 x 1.5V AA batteries (excluded)

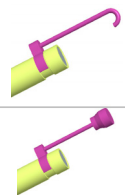
**Battery Low Warning**

While RED battery indicator on the right of the screen turn on and Letter " low Battery" shows on the screen, it means the batteries power low. Please turn off the machine and replace the new batteries immediately.  
 Or the machine will shut off automatically, the photo or video files may be missing.



**Installing the Accessory Hook is for receiving parts.**

Magnetic is for receiving metallic parts like screws.



USB cable connects to PC for data storing or reviewing.



AV cable connects to TV for bigger screen watching



At the end of its serviceable life, this product should not be treated as household or general waste. It should be handed over to the applicable collection point for the recycling of electrical and electronic equipment, or returned to the supplier for disposal.